



# AUTOMATIC SLIDING DOOR SOLUTIONS

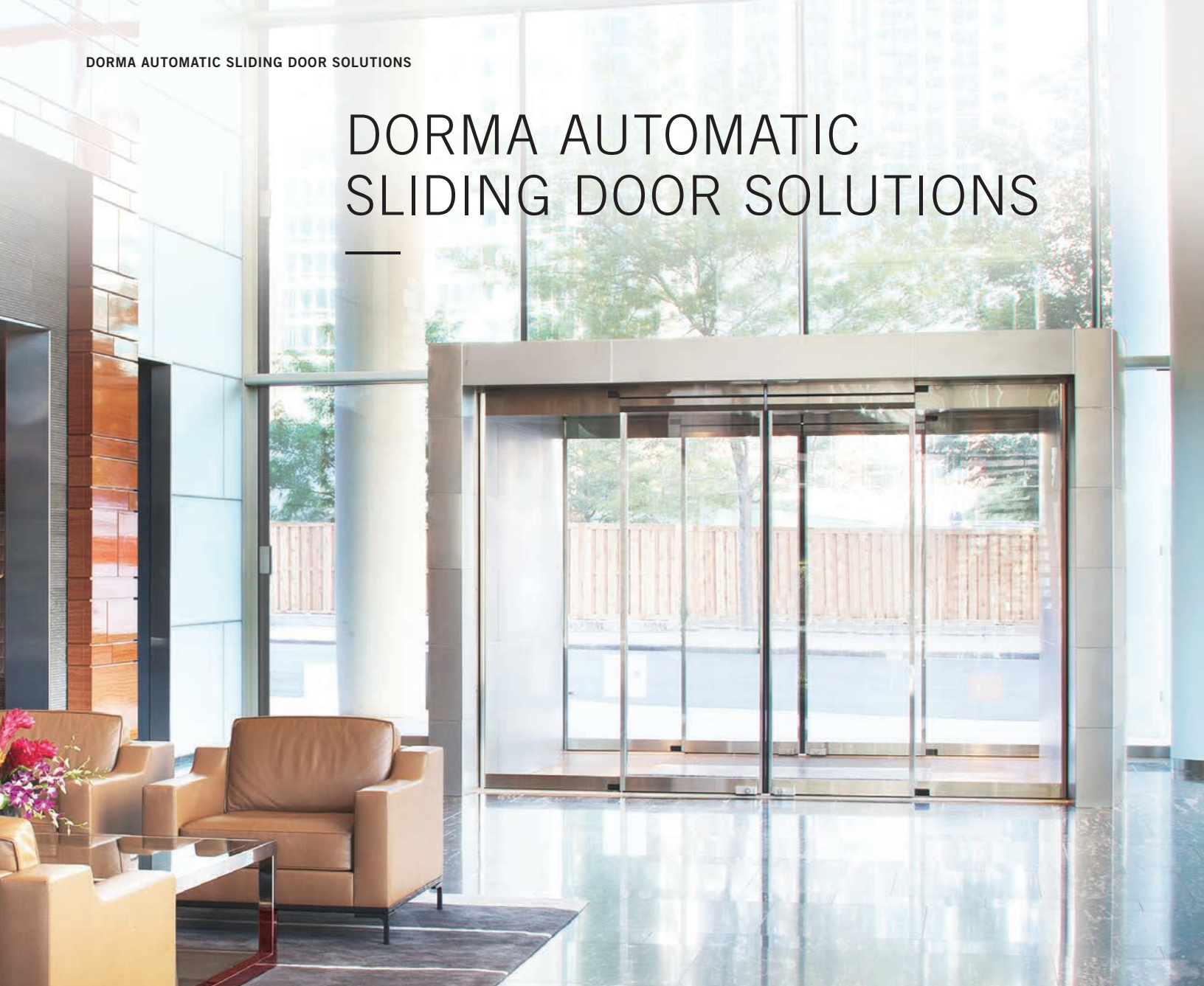
—  
Enabling Better Buildings™





# DORMA AUTOMATIC SLIDING DOOR SOLUTIONS

---



Front cover and above:

**ESA400 Fine Frame Automatic Sliding Door**

Related Companies Luxury Apartments

500 Lake Shore Drive – Chicago, IL

Architect: Solomon Cordwell Buenz

Providing strength, beauty, and technology all in one package, the ESA Automatic Sliding Door is one of the most intelligent, efficient, and technologically advanced doors on the market.

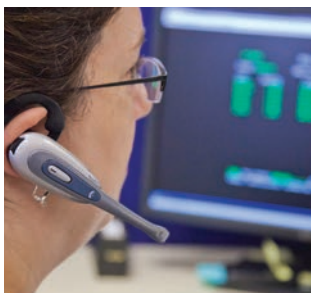
With more than 100 years of experience and subsidiaries in more than 50 countries worldwide, DORMA is the preferred choice of leading architects, specifiers, and general contractors and your source for complete access solutions and services.

DORMA is a national member of the the United States Green Building Council (USGBC). We understand the importance of LEED certification and welcome the challenge to build safe and sustainable buildings by aligning our products with standards set by the USGBC.

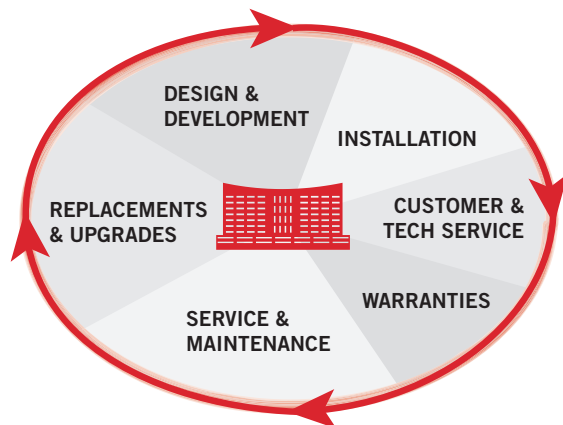


Underpinning all DORMA access solutions are key values that drive us as a company:

- Innovation
- Engineering quality
- Sustainability
- Quality customer experience
- Dependable service & maintenance



Adhering to these key values enables DORMA to provide premium access solutions backed by a breadth of available services—from writing specifications to ongoing customer and technical service; from installation support to service and maintenance.



**DORMA Access Solutions ensure support for the lifetime of your building.**

DORMA automatic sliding door systems are powerful examples of our complete, holistic solutions; we provide an arc of essential products and services stretching from design and specification all the way through ongoing performance.

When you choose DORMA products for the reliable, secure, and attractive entrances your project demands, we become your partner for the life of those access solutions.

- Experienced consultants are on staff to assist in building design and in writing specifications to identify the best DORMA access solutions for your project.
- AAADM-certified DORMA technicians can install your entrances and, post-installation, service and maintain them, as well.
- Our Customer and Technical Service teams are on hand to answer your questions and help with any difficulties you encounter.
- We stand behind DORMA product warranties, the best in the industry.
- DORMA products are the perfect choice when the time comes for product replacements or upgrades.

By focusing on the life cycle of your building, DORMA access solutions ensure your projects will succeed beyond expectations, now and into the future.



## CONTENTS

- 4-5 DORMA Automatic Sliding Door Solutions
- 6 Quality ESA Technology
- 7 Industry-Best Finishes and Cladding
- 8 ESA200/ESA300 Stile and Rail Doors
- 9 ESA-T Auto-Telescopic Doors
- 10 ESA400 Fine Frame Doors
- 11 ESA500 All Glass Doors
- 12 ESA200/300-HP Hurricane-Resistant Doors
- ESA200-B1 Blast-Resistant Doors
- 13 DORMA MAGNEO Magnetic Drive Sliding Entrance System
- 14 Architectural & Design Support
- 15 DORMA Service & Installation



# NAME THE NEED

Your entrance needs an automatic sliding door?  
 DORMA has the perfect solution.

## ESA200 Commercial Fixed Sidelite Door



The ESA200 is an extruded aluminum stile and rail door designed for interior or exterior applications where emergency breakout of the sliding panels only is required.

- Breakout of sliding panels only
- Adjustable astragal
- Narrow or medium stile
- Overhead combination safety and activation sensors
- Performance glass options
- Security interface
- High traffic volume
- Low maintenance

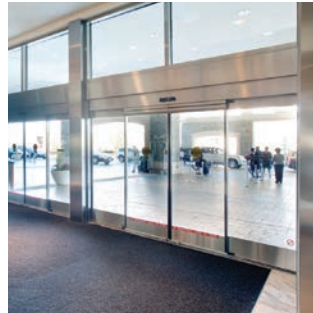
## ESA300 Commercial Full-Breakout Door



The ESA300 is an extruded aluminum stile and rail door designed for interior or exterior applications where emergency breakout of both sliding and sidelite panels is required.

- Full break out capability
- Adjustable astragal
- Narrow or medium stile
- Overhead combination safety and activation sensors
- Performance glass options
- Security interface
- High traffic volume
- Low maintenance

## ESA400 Fine Frame Automatic Sliding Door



For elegant and upscale applications, the ESA400 Fine Frame is a perfect marriage of beauty and functionality.

- All glass look
- Full break out capability
- Dual vertical weather sweeps
- Fine-Frame style
- Adjustable astragal
- Overhead combination safety and activation sensors
- Factory-glazed 3/8" tempered glass
- Security interface
- Continuous security interlock
- High traffic volume
- Low maintenance

## ESA500 All Glass Automatic Sliding Door



The DORMA ESA500 door is perfect for creating an all glass look for interior applications where emergency breakout of sliding panels only is required.

- All glass look
- Breakout of sliding panels only
- 1/2" tempered glass
- Dual vertical weather sweeps
- Overhead combination safety and activation sensors
- Security interface
- Low maintenance

**ESA300 Automatic Sliding Door**  
 Boston Children's Museum  
 – Boston, MA







### ESA200/300/400/500-T Auto-Telescopic Door



Auto-telescopic ESA-T doors are perfect for corridor applications and openings that require an extra wide clear opening distance.

- OHC safety & activation
- Breakout of sliding panels only OR full breakout
- Ultra-rigid extrusion to enable telescoping action
- Exceptionally narrow compact header, 7-1/2" high by 6-5/8" deep
- Narrow or medium stile
- Large clear door opening widths up to 20'
- Adjustable astragal
- Performance glass options
- Security interface
- High traffic volume

### ESA200/300-HP Hurricane-Resistant Door



The ESA-HP automatic door meets Dade County & Florida Building Code regulations.

- OHC safety & activation
- Breakout of sliding panels only OR full breakout
- Non-breakout models can act as security doors due to superior glass strength & 5-point locking system
- 1/4" tempered glass or 5/32" stormglass
- No unsightly exposed screws-on-glass stops
- Eliminates need for hurricane shutters
- Steel re-inforced
- Low maintenance
- Security interface
- High traffic volume

### ESA200-B1 Blast-Rated Door



ESA200-B1 Blast-Rated doors meet US DoD requirements for anti-terrorism building standards (UFC 4-010-01), commonly required on military bases and public buildings.

- OHC safety & activation
- Breakout of sliding panels only
- Doors available at standard height and up to 14' wide
- Medium stiles
- Enhanced security 3- or 5-point locking system
- Steel re-inforced
- Impact glass
- Security interface
- Low maintenance
- High traffic volume

### MAGNEO Magnetic Drive Sliding Door System



Powered by linear magnetic drive technology, MAGNEO redefines the function and design of sliding systems. Minimalist, clean lines transform and enhance all styles of interior design.

- Non-breakout
- For interior applications
- Low maintenance
- Fewer moving parts
- Minimal energy usage
- Minimal and low maintenance
- Low or no profile
- Whisper quiet, hands-free, space-saving operation
- Meets ANSI/BHMA A156.38

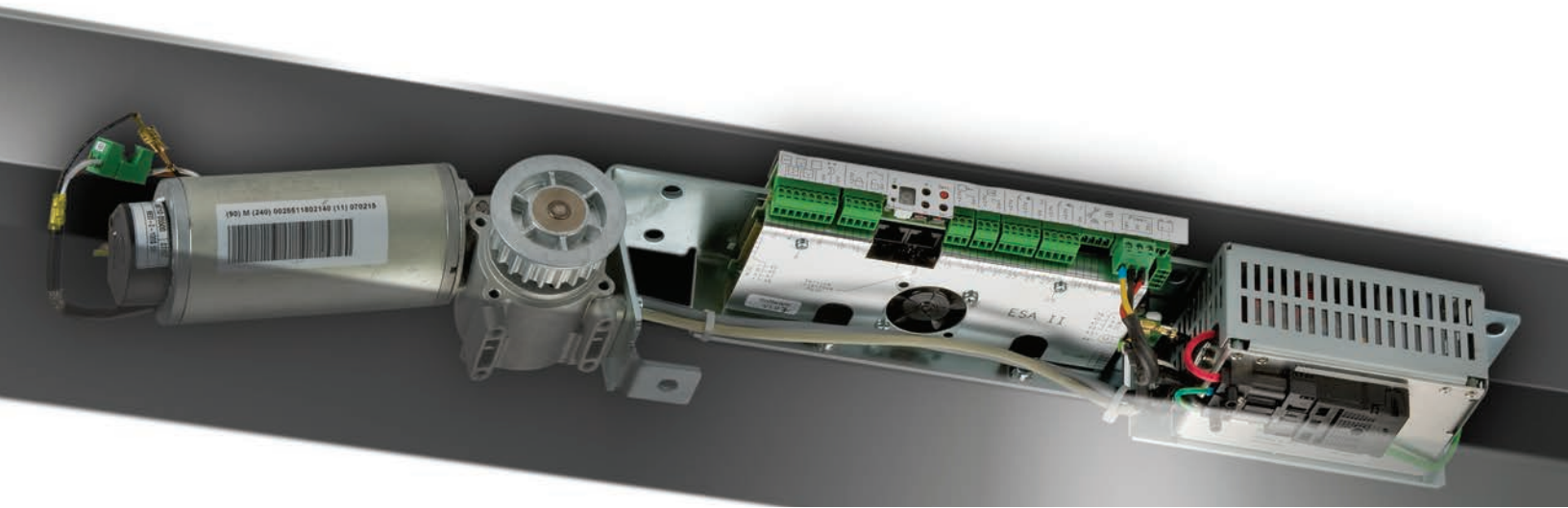


**ESA300 Automatic Sliding Door**  
Memorial Hospital of Rhode Island  
– Pawtucket, RI

# QUALITY ESA TECHNOLOGY

---

The German-Engineered and USA-Manufactured ESA Automatic Sliding Door Controller



DORMA ESA doors are commercial grade, high traffic volume automatic sliding doors designed to be the strongest in the industry. All ESA door packages are manufactured in the USA with a heavy-duty, German-engineered controller that ensures sturdy, reliable access in travel centers, retail outlets, office buildings, healthcare facilities, and countless other building types.

- **Heavy-duty.** Germany's reputation for engineering excellence has built up over decades. The German-engineered controller that drives every DORMA ESA door reinforces that reputation with reliable performance over time in countless types of high traffic applications. The controller easily handles door panels weighing up to 400 lb.
- **High torque design.** The ESA controller features a high torque design, which leads to better control when opening and closing heavy doors and to quicker acceleration and deceleration.
- **Proven.** Enterprises such as state-of-the-art healthcare facilities, high end residential complexes, and big box chain stores have all put their trust in ESA doors to provide the reliable and safe traffic flow their businesses depend on.
- **Innovative.** DORMA was the first to design an automatic sliding door controller that fits within a 4-1/2"-depth header. The low profile allows ESA doors to be installed flush with the surrounding structure, blending easily into the overall architectural design and creating a sleek, unbroken sightline.

- **Energy efficient.** The ESA controller's energy-efficient design minimizes the amount of power it draws, while its quick response time minimizes your building's exposure to the elements.
- **Microprocessor control.** The microprocessor controller motor-encoder system—which can interface with any security system—constantly monitors door position, delivering a higher level of efficiency and safety. DORMA's innovative software ensures smooth operation that optimizes performance and ensures extended product life.





# INDUSTRY-BEST CLADDING & FINISHES

## Custom and Standard Finishes to Match Any Design

- **The best cladding in the industry.** DORMA couples modern technology with old world craftsmanship to manufacture the best architectural finishes of any manufacturer, bar none. In DORMA's factory in Lake Bluff, IL, experienced craftsmen fabricate cladded sliders in stainless steel and bronze using skills honed over many years. They apply the same custom ornamental metal finishes to the sliders as are applied to DORMA's Crane Revolving Doors. Other manufacturers hand off this type of finishing to subcontractors, whereas every ESA sliding door is 100% manufactured by DORMA.



The already stylish ESA400 Fine Frame and ESA500 All Glass doors make elegant entrances when clad in a DORMA ornamental architectural finish. (Brushed stainless steel cladding shown to the left.)

- **Unparalleled choice of finishes.** ESA doors can be customized to match virtually any design because DORMA offers such an extensive range of finishes: wet paint, powder coat, special anodized, and clad finishes—in stock, standard, and custom colors. The base package standard finish is Clear or Dark Bronze Anodized.



### ESA200 in Standard Dark Bronze Anodized Finish

Hyatt Lodge at Ronald McDonald Campus  
– Oak Brook, IL  
Architect: Goettsch Partners



### ESA300 with Clad Bronze Finish

JW Marriott Chicago – Chicago, IL  
Architect: Lucien Lagrange & Assoc.



Cladded sliders in stainless steel and bronze are custom fabricated by the same craftsmen who apply ornamental metal finishes to DORMA's Crane Revolving Doors.



# THE TOUGHEST, STRONGEST DOOR

## ESA200/300 Automatic Sliding Doors

Suitable for both interior and exterior applications, the ESA200 and ESA300 are extruded aluminum stile and rail automatic sliding doors that boast the strongest panels in the industry. Whether impacts come from hospital orderlies navigating stretchers, porters handling luggage, shoppers pushing carts, or heavy falling objects, ESA door panels and bottom door guides resist racking to stay true.

- **Heavy-duty Delrin and brass rollers.** For every panel, there are four heavy-duty Delrin rollers, providing the smoothest and quietest operation in the industry. All sliders utilize heavy-duty brass rollers for our breakout system. Full breakout ESA300 doors also feature a brass roller at the bottom of each sidelite.
- **Anti-panel-racking system and robust slide block construction.** ESA standard door unions are the same as those used on our hurricane door panels. Our heavy-duty corner block construction creates the industry's strongest structural door panel. All in all, our design creates a union much stronger than welding and threaded rods.
- **Industry best bottom door guide.** Designed to last and not fail, super strong ESA doors include a superior long lasting floor guide that does not require routine maintenance.
- **Exceptionally strong .125 thick aluminum profiles.** DORMA makes the ESA header and door panels from .125 thick 6063 aluminum, staying true to the spec while other manufacturers thin out their profiles. The result is one of the most structurally sound door packages in the industry.
- **Aesthetically superior.** DORMA's ESA design couples rugged door panel construction with an elegant, sleek appearance. Our uniform glass stops are designed to maintain consistent sightlines and daylight openings from door panel to door panel. This ensures that sliders using different glass within a vestibule will maintain the same daylight openings.
- **Features.** Partial breakout (sliding panels only - ESA200); full breakout (ESA300); adjustable astragal; narrow or medium stile; overhead combination safety and activation sensors.

### ESA200

Little Colorado Medical Center – Winslow, AZ  
Architect: Mittelstaedt, Cooper & Associates, Ltd.



### ESA300

PHX Sky Train  
– Phoenix, AZ  
Architect: HOK



### ESA200

Kansas City International Airport – Kansas City, MO



# THE TELESCOPIC DOOR FOR EXTRA-WIDE OPENINGS

## ESA200/300/400/500-T Auto-Telescopic Door

- **Extra wide clear opening.** ESA-T Auto-Telescopic models feature 3-panel single slide and 6-panel biparting doors designed to increase clear door-opening widths by approximately 35%. They provide the perfect solution for corridor applications and openings that require an extra wide clear opening.
- **Rugged and reliable.** The rugged header utilizes the proven ESA slider drive unit, with an added ultra-rigid extrusion to enable the telescoping action. The reliable belt-driven design features a removable outer track.
- **Compact header.** The compact header, 7-1/2" high by 6-5/8" deep, is exceptionally narrow for a telescopic door and minimizes projection from the door jambs. The overall package can handle widths greater than 16'.
- **Two breakout designs.** The ESA200/500-T doors feature partial breakout of the sliding panels only, while the ESA300/400-T doors feature full breakout of all panels. Both breakout designs are completely engineered, manufactured, and assembled by DORMA.



The **ESA-T** utilizes the proven ESA drive unit with an ultra rigid extrusion and a reliable belt-driven design that features a removable outer track.

## ESA OPTIONS

### Features & Options

- Battery backup for keeping the door operational during power loss
- Various thresholds to fit any site condition
- Bottom rail heights: 7-1/2", 10", and 12"
- Muntin bar widths: 6", 7", and 10"
- Crash bars
- Glass stops up to 1"; sloped glass stops available

### Access & Security Options

- Electromechanical lock
- Panic device
- Remote release and lockdown
- Security integration relays
- Magnetic security contacts
- Stainless-steel-reinforced armored strike
- 3-point maximum security mortise lock
- Keyed switch control panel
- Impact glass
- Security glass stops

### ESA Wind Zone Package

- Sensor rain guard
- Flush panic device
- DORMA ITS96 closer on active leaves

### Custom Features

- Transoms
- Sizes
- Finishes
- Configurations

**Note:** For all custom features, please consult the factory at 844-SPECNOW (844-773-2669).

# THE REFINED DOOR

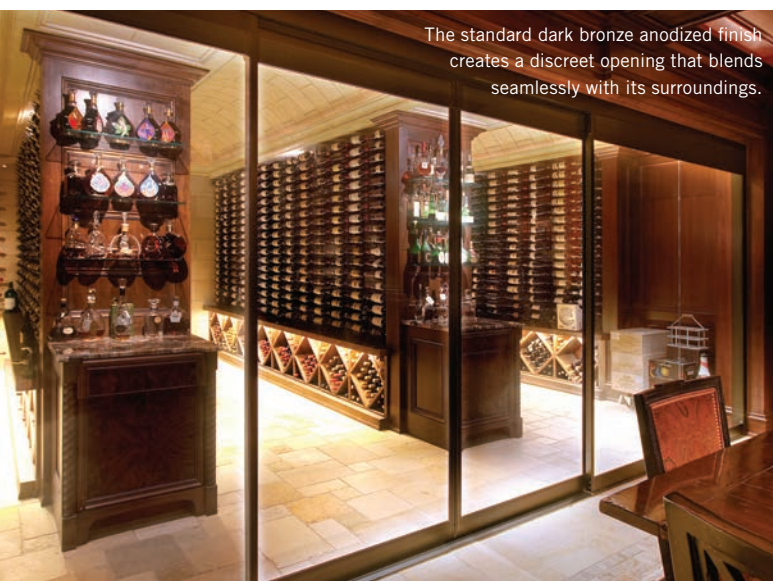
The DORMA ESA400 is the only automatic sliding door in the industry to come factory glazed.

## ESA400 Fine Frame Automatic Sliding Door

- **The perfect marriage of beauty and functionality.** For elegant, upscale, and even monumental applications, the ESA400 Fine Frame with full breakout capability combines full view aesthetics with excellent weather-sealing qualities. It's ideal for interior or exterior applications such as high-end retail stores or modern office buildings.
- **Customize the look to match your design.** The unparalleled choice of finishes DORMA offers allows you to match your ESA400 precisely to your design. In addition to wet paint, powder coat, and anodized finishes, a variety of ornamental architectural metals can be applied by DORMA's own craftsmen to create a spectacular entrance.
- **Features:**
  - Industry's only automatic slider to come factory-glazed
  - Industry's only continuous door panel interlocking system for the ultimate in safety
  - Full break out capability
  - Dual vertical weather sweeps
  - Fine-Frame profile with narrow or medium stiles
  - Adjustable astragal
  - Overhead combination safety and activation sensors
  - Optional DG1000 Panic Device



**ESA400 Fine Frame** Exterior (top) and interior (above)  
Related Companies Luxury Apartments  
500 Lake Shore Drive – Chicago, IL  
Architect: Solomon Cordwell Buenz



The standard dark bronze anodized finish creates a discreet opening that blends seamlessly with its surroundings.

**ESA400 Fine Frame**  
Private Residence



**ESA400 Fine Frame**  
Gaylord National Resort & Convention Center – Washington DC  
Architect: Gensler



# THE ALL GLASS DOOR

## ESA500 All Glass Automatic Sliding Door

- **Smooth, clean look.** An all glass door designed for interior applications, the DORMA ESA500 features emergency breakout of the sliding panels only.
- **Finished to perfection.** Like all ESA doors, the ESA500 can be finished to meet your design goals precisely. In addition to wet paint, powder coat, and anodized finishes, a variety of ornamental architectural metals can be applied by DORMA's own craftsmen to create a spectacular entrance.
- **Intelligent, efficient, and technologically advanced.** The ESA500 has a five-function program switch, adjustable motion sensor, and optional self-closing side panels.
- **Features:**
  - Breakout of sliding panels only
  - 1/2" tempered glass
  - Dual vertical weather sweeps
  - Recessed floor track adjacent to sidelite
  - Clear or dark bronze anodized finish
  - Overhead combination safety and activation sensors
  - Only all glass sliding door in the industry with DG1000 Panic Device option



**ESA500 All Glass**  
The Bow Office Tower – Calgary, Alberta  
Architect: Gensler



**ESA500 All Glass**  
Aloft Detroit at The David Whitney – Detroit, MI  
Architect: Kraemer Design Group PLC

# THE HURRICANE DOOR

## ESA200/300-HP Hurricane-Resistant Automatic Sliding Door

- **Designed to withstand nature's wrath.** Rigorous testing has ensured that the ESA200/300-HP door meets, and even exceeds, Dade County and Florida Building Code regulations.
- **Durable, attractive design and clean lines.** In addition to the door panel's storm and wind resistance, the ESA200/300-HP has the strongest and most durable header in the industry. There are no unsightly exposed screws-on-glass stops.
- **Increased security.** Superior glass strength and a 5-point locking system allow non-breakout models to act as security doors.
- **Impact resistance.** The ESA-HP door is reinforced with steel to ensure that it can withstand large missile impacts. You can also choose from a variety of breakout configurations and several hurricane-rated glass or stormglass options.
- **Cost-effective.** DORMA hurricane-resistant sliders decrease costs by eliminating the need for hurricane shutters.



# THE BLAST-RATED DOOR

## ESA200-B1 Blast-Rated Automatic Sliding Door

- **Blast protection.** People and property are the critical assets of any building. As recent events have demonstrated, blast protection is a domestic concern and should be considered a part of all safety assurance programs. For this reason, DORMA has developed a blast-mitigation automatic sliding door to meet today's terror threats.
- **Meets US DoD requirements.** DORMA ESA200-B1 Blast-Rated Automatic Sliding Doors are specifically designed to meet US DoD requirements for anti-terrorism building standards (UFC 4-010-01) with conventional standoff distances, commonly required on military bases and public buildings.
- **The ultimate in safety.** The ESA200-B1 is the first automatic slider to meet both blast and emergency egress requirements.
- **Standard features.** These doors are available at standard height and up to 14' wide packages with medium stiles and enhanced security 3- or 5-point locking.



The DORMA ESA200/300-HP automatic sliding door meets Dade County and Florida Building Code regulations, keeps your building safe and secure, provides smooth and durable operation—all the while providing an aesthetically pleasing entrance.

**MIAMI-DADE COUNTY**  
APPROVED

Model	FBC #	NOA #
ESA200-HP(NI)	FL8072.1	11-1213.03
ESA200-HP(LMI)	FL8072.2	11-1213.04
ESA300-HP(LMI)	FL8072.3	12-1101.01
ESA300-HP(NI)	FL8072.4	11-1213.05



# THE ULTRA-QUIET MAGNETIC DOOR

The DORMA MAGNEO Magnetic Drive Sliding Door System—the first interior automatic sliding door solution in the industry

Powered by linear magnetic drive (LMD) technology, the DORMA MAGNEO redefines both the function and design of sliding systems. MAGNEO works in previously impractical interior spaces—whether public, commercial, or private. Its sleek Contur design has minimalist clean lines that blend seamlessly to meet discriminating interior applications. The innovative magnetic technology ensures that the MAGNEO is safe, reliable, whisper quiet, touch free, and resistant to wear.

- **Ideal for both new and retrofit interior applications.** The MAGNEO's modern design dramatically transforms and enhances interior spaces while supporting green initiatives at the same time. Its easy operation makes it an attractive and efficient way to update both the function and appearance of interior doorways.
- **Safe, low energy door.** Designed to meet ANSI 156.38, the versatile MAGNEO meets all safety requirements for low energy applications. Its extra sensitive operation instantly detects any obstruction. Activation is achieved via touchless design push plate, radio remote control, or traditional infrared motion sensors.



On light contact, the panel instantly stops and reverses direction.

## Innovative

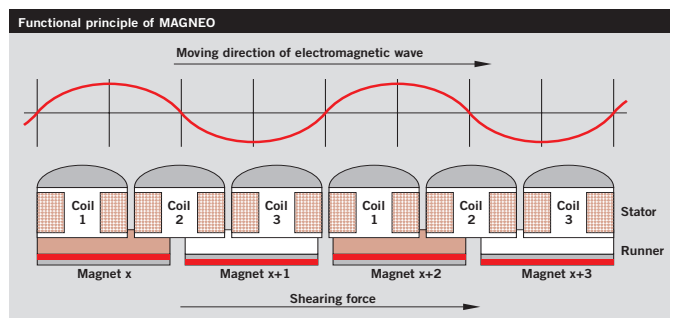
With LMD-enabled features, DORMA MAGNEO transforms the function and design of automatic sliding entrances:

- Fewer moving parts
- Minimal energy usage
- Minimal maintenance
- Low or no profile
- Whisper quiet, hands-free, space-saving operation
- Previously unimaginable functions and designs



**DORMA MAGNEO**  
Garden Communities  
– San Diego, CA

## MAGNEO—driven by linear magnetic drive (LMD) technology



# ARCHITECTURAL & DESIGN SUPPORT

---

DORMA offers the industry's most comprehensive services—from specification and new installation to ongoing maintenance and support.

DORMA provides quality support spanning all stages of a project, from design and specification all the way through installation and maintenance. In-house Consultants are available to help with design and specifications. You can depend on our Customer and Technical Service teams to provide exceptional ordering and product support, while our network of Service and Installation providers can help you protect your investment from installation through on-going maintenance.

Experienced consultants are on staff to provide you with comprehensive specification writing services—including consultation on the complete range of access solutions: automatic door systems, including sliding, swinging, and revolving doors; glass systems and hardware; architectural hardware; and operable walls.

DORMA's consultants offer services such as:

- Developing code-compliant access solution specifications and schedules
- Developing detailed specifications for all other product groups
- Meeting with the Design Professional and/or Owner to discuss project requirements and security coordination
- Assisting with development of a professional key system
- Preparing budgets
- Reviewing substitution requests
- Reviewing submittals
- Responding to RFIs, Owner's comments, and comments from other entities
- Assisting with punch list development and administration

For comprehensive project support, call DORMA at **844-SPECNOW (844-773-2669)**.



**Gaylord National Resort & Convention Center**  
– Washington DC  
Architect: Gensler



**ESA300**  
**PHX Sky Train** – Phoenix, AZ  
Architect: HOK





# DORMA SERVICE & INSTALLATION

---

With an emphasis on customer service, DORMA is committed to selling, installing, and servicing automatic, revolving, and manual doors and hardware for commercial applications.

DORMA's nationwide service and maintenance network provides responsive, professional, and comprehensive sales, technical, project management, and maintenance support. With over 28 offices throughout North America, DORMA has hundreds of dedicated professionals available to respond to your individual needs.

Committed to the highest level of customer service possible, all DORMA service technicians are American Association of Automatic Door Manufacturers (AAADM) certified.

Visit [go.dorma.com/service](https://go.dorma.com/service) to learn more about DORMA USA Service and Installation.





DORMA USA, Inc.  
Dorma Drive, Drawer AC  
Reamstown, PA 17567  
844-SPECNOW (844-773-2669)  
[www.dorma.com](http://www.dorma.com)